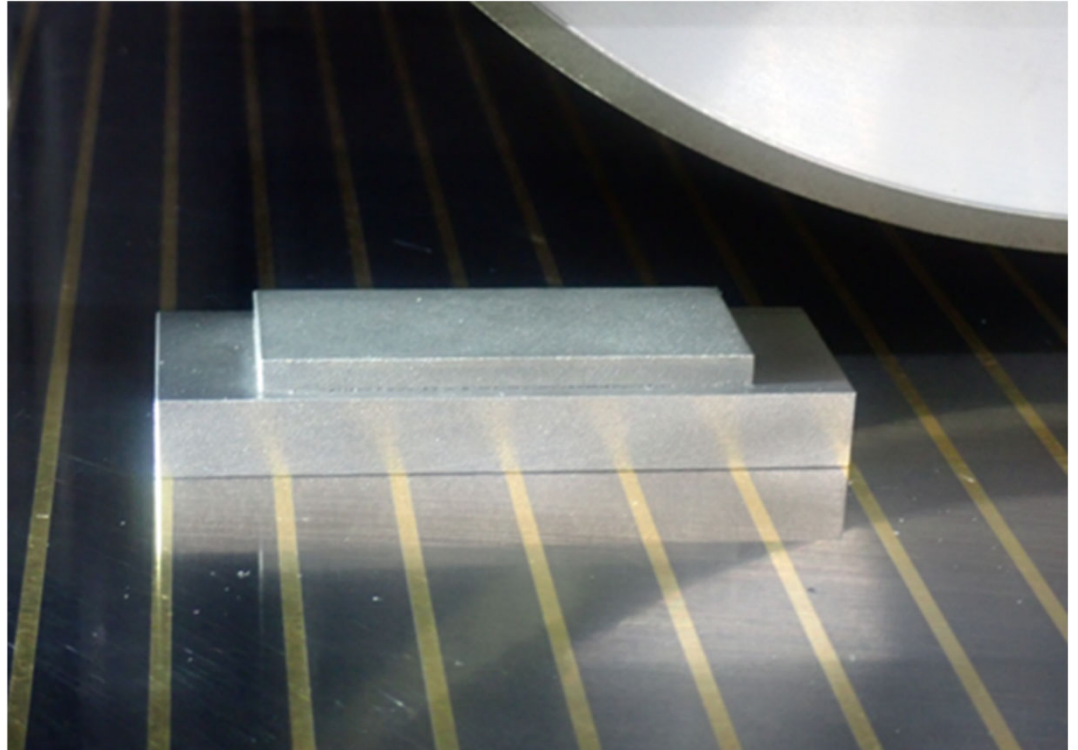


A-Mola

Metal Dresser for Diamond and CBN Wheel

A-Mola



Product Features

- **Long Life and Faster Truing**

UP to 50 times higher truing ratio than WA dressers

- **On-Machine Dressing, No Special Drive**

No mounting, removing, or runout adjustment required
Higher machining efficiency

- **Environmentally Friendly**

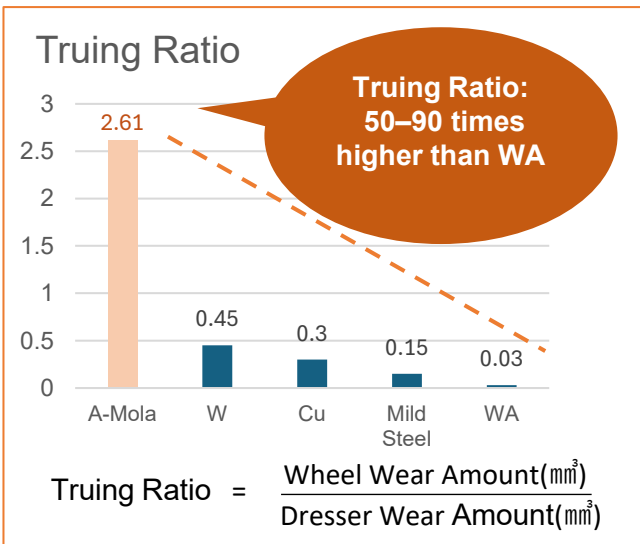
Less swarf generation compared to WA dressers



Asahi Diamond

Product Overview

A-Mola is ideally suited for truing and dressing diamond and CBN resin wheels. Please consult us regarding applications for other bond types.



Dressing Conditions (Cylindrical Grinding)

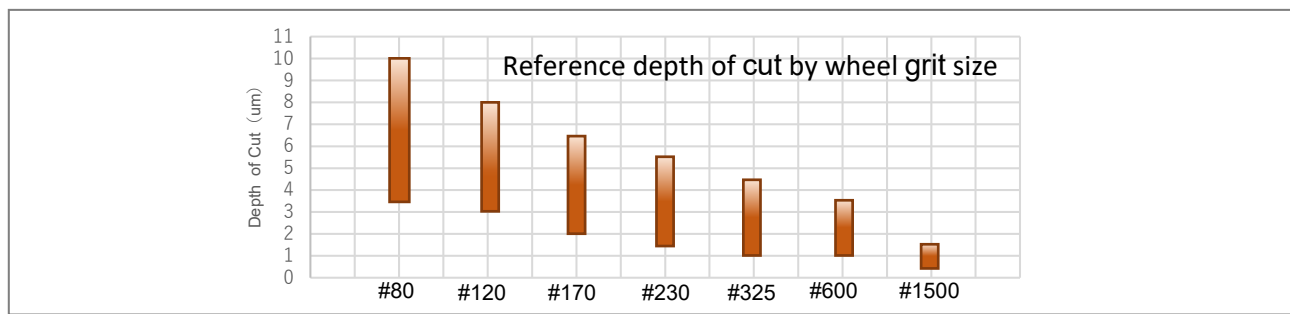
Dressing Method	Traverse
Wheel Peripheral Speed(m/min)	600~900
Dresser Peripheral Speed(m/min)	10~15
Feed Pitch(mm/rev)	0.5~2
Dressing Direction	UP-Dressing

Dressing Conditions (Surface Grinding)

Dressing Method	Bias
Wheel Peripheral Speed(m/min)	600~900
Feed Rate(m/min)	10~15
Feed Pitch(mm)	0.5~2

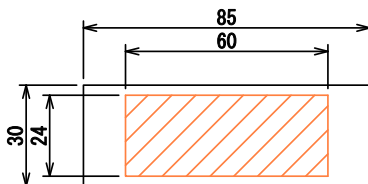
Dressing Conditions (Double-Disc Grinding)

Dressing Method	Through-Feed
Rotational Speed(min ⁻¹)	175
Dresser Rotation Speed(min ⁻¹)	10

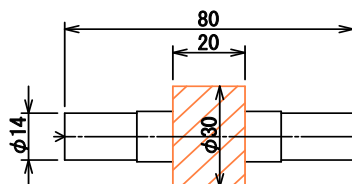


Standard Specifications

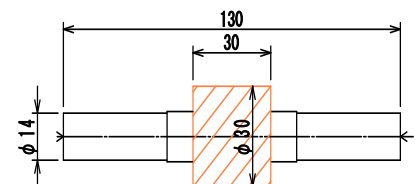
A-10002



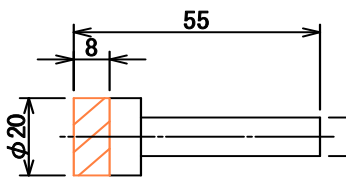
A-10003



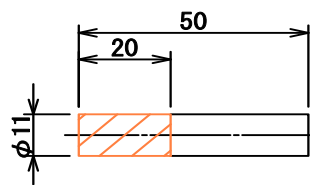
A-10004



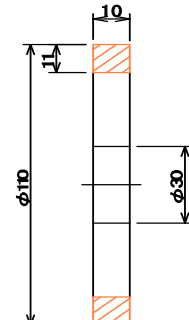
A-10005



A-10006



A-1001b



Minimum order quantity: 1 pc.
Please contact us for non-standard shapes or dimensions.