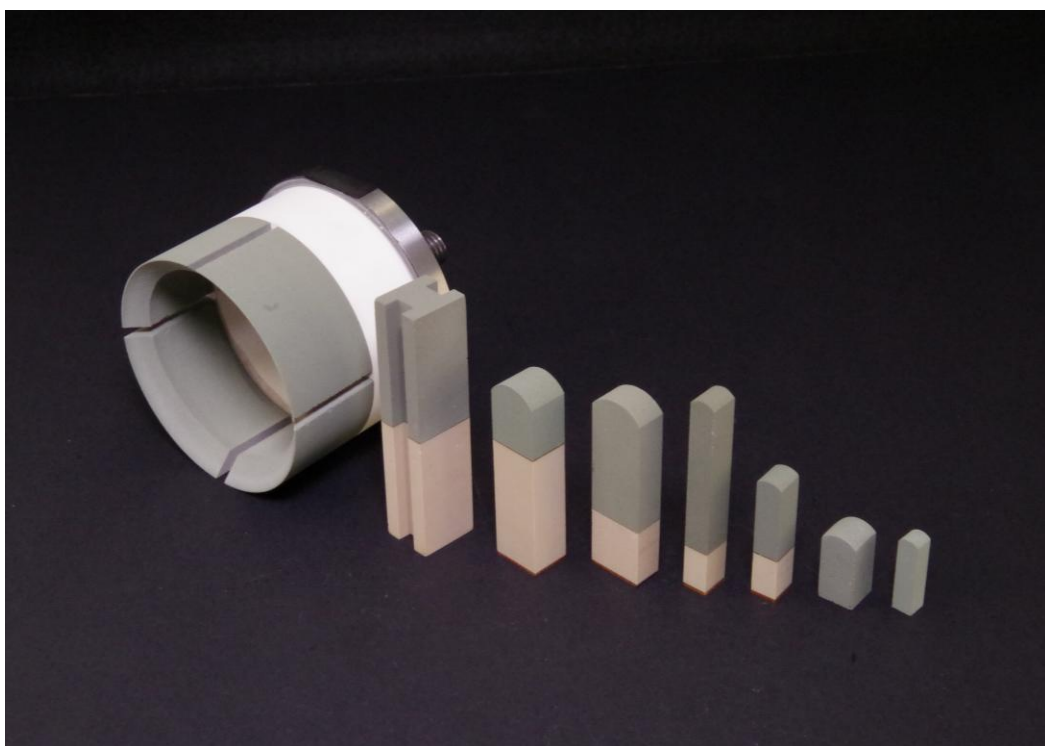


AFF Wheels & Stones

Face grinding and Superfinishing for race way

AFF Wheels & Stones



Product Features

- Highly porous structure ensures stable grinding performance and reduces clogging.
- Operates effectively across a wide range of grinding conditions (from low to high speed).
- Offers 10–30 times longer life compared to conventional stones.
- Ready to use straight out of the box, reducing pre-grinding time compared to CBN stones.



Asahi Diamond

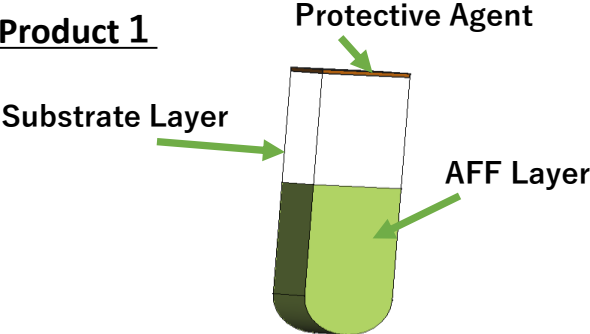


Product Specifications

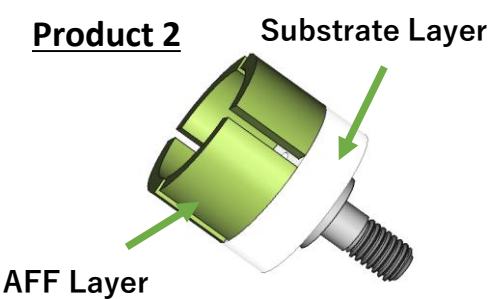
Product 1	Product Specifications
Size	□1mm~□15mm Overall Length100mm
Abrasive Layer	1mm~25mm
Grain Size Range	Equivalent to # 1,000 ~#8,000
Oscillation Range	300cpm~1,000cpm
Maximum Operating Peripheral Speed	45m/s
Application	Superfinishing and End-Face Grinding

Product 2	Product Specifications
Size	Φ 3mm~ Φ 100mm
Abrasive Layer	1mm~25mm
Grain Size Range	Equivalent to # 1,000 ~#8,000
Maximum Operating Peripheral Speed	45m/s
Application	Superfinishing and End-Face Grinding

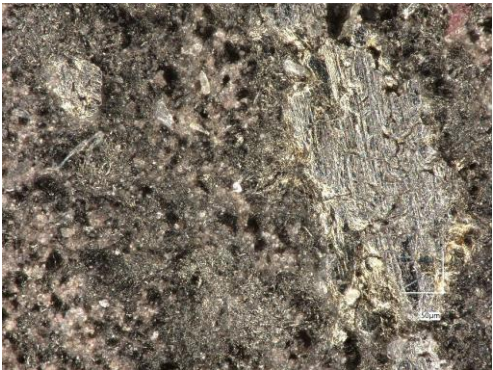
Product 1



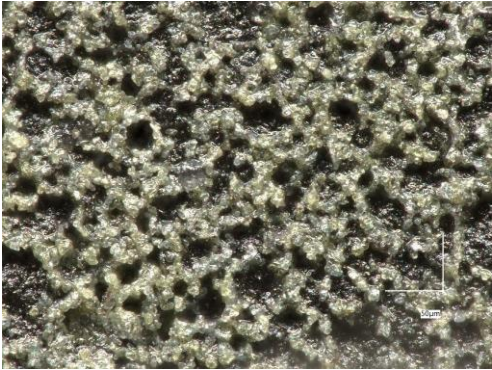
Product 2



Surface Comparison After Use



CBN



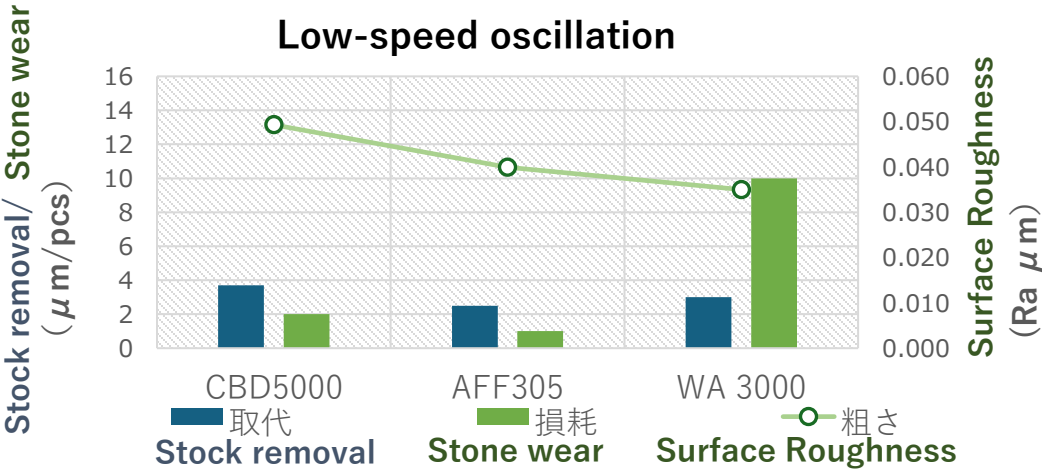
AFF

- Compared with CBN stone, AFF stone shows less clogging on the surface in high pressure condition use.
- We can provide suitable spec in response to your request.



Technical Data (Outer Ring Race Way #6200)

Machining Conditions	Rough Machining	Finish Machining
Workpiece Rotation(rpm)	2,650	2,650
Cycles per minute(cpm)	350	100
Processing Time (s)	3.0	3.0
Oscillation Angle (°)	± 15	± 15
Pressure (MPa)	0.15	0.15



Machining Conditions	Rough Machining	Finish Machining
Workpiece Rotation(rpm)	5,050	5,050
Cycles per minute(cpm)	700	200
Processing Time (s)	3.0	3.0
Oscillation Angle (°)	± 15	± 15
Pressure (MPa)	0.15	0.15

